

## ASSEMBLY INSTRUCTIONS FOR THE MFC-3039 ROTATING PROBE-ARRAY HOLDER

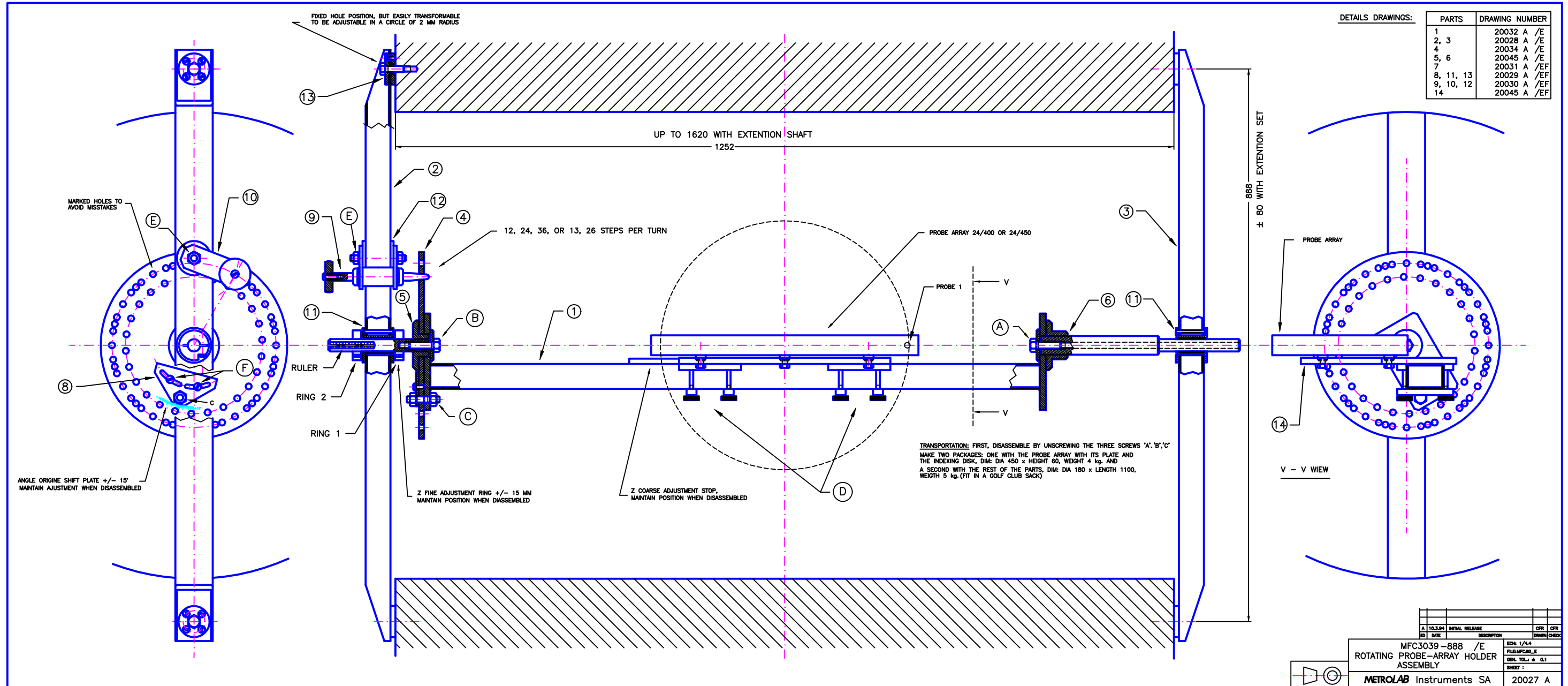
---

(The numbers and capital letters refer to components and bolts on the schematic No 20027A)

- 1) Put the *Rear-Axle* ⑥ on the *Main-Girder* ① and attach it with the *bolt A*.
- 2) Put the *Coding-Disk* ④ on the *Front-Axle* ⑤ and install both pieces on the *Main-Girder* ①. Maintain in place with the *bolt B*. To allow adjustment, do not tighten.
- 3) Insert the bolt and *nut C*. Tighten *bolt B*.
- 4) Attach the MFC3038 Probe-Array on the *Probe-Holder* ⑭ with screws. Mount the *Probe-Holder* ⑭ on the *Main-Girder* ①. Adjust the Z axis position by moving the *Probe-Holder* ⑭ then tighten the *screws D*.
- 5) Fix the *Rear-Girder* ③ on the rear flange of the magnet.
- 6) Put the *Rear-Axle* ⑥ into the *Bearing* ⑰ of the *Rear-Girder* ③ and put in place the *Front-Girder* ② on the front flange of the magnet.
- 7) Fine adjustment of the Probe-Array Z axis position is made by loosening location *Ring 1* and *Ring 2* on the *Front-Axle* ⑤ and moving the complete *Main-Girder* ① and Probe-Array assembly using the *Ruler* as a position reference. After adjustment press *Ring 1* and *Ring 2* firmly against each end of the *Bearing* ⑰ and tighten the lock screws.
- 8) To select the inner or outer holes in the *Coding-Disk* ④, loosen the *nut E*, insert the *Coding-Pin* ⑨ into a hole of the selected diameter and rescrew the *nut E*. ( Refer to 10) below for angle increments. )
- 9) To adjust the position of the reference angle (angle 0), loosen the two *screws F* and the two *bolts B* and *C*. Put the *Coding-Pin* ⑨ into the reference hole and adjust the angle by rotating the *Main-Girder* ①. The adjustment range is  $\pm 10^\circ$ . Then tighten up the two screws and two bolts.
- 10) To map the magnet, rotate the Probe-Array using the *Coding-Disk* ④ and put the *Coding-Pin* ⑨ into the hole marked with the appropriate symbol.

Symbols are:

Outer diameter		Inner diameter	
■	: 12 angles/turn (30°)	( )	: 16 angles/turn (22.5°)
▼	: 24 angles/turn (15°)	every hole	: 32 angles/turn (11.25°)
( )	: 36 angles/turn (10°)		



ECHELLE POUR FORMAT A2 : 1/4.4